

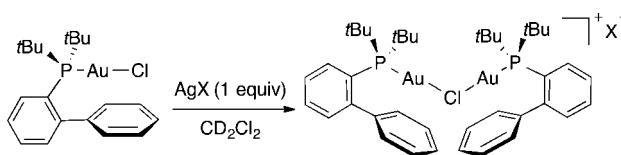
On the Silver Effect and the Formation of Chloride-Bridged Digold Complexes

Anna Homs, Imma Escofet, and Antonio M. Echavarren^{*,†}Institute of Chemical Research of Catalonia (ICIQ), Av. Països Catalans 16,
43007 Tarragona, Spain

aechavarren@iciq.es

Received October 1, 2013

ABSTRACT



Abstraction of chloride anion from Au(I) complexes such as JohnPhosAuCl in noncoordinating solvents with 1 equiv of a silver salt, or even larger amounts, leads to the formation of chloride-bridged dinuclear gold(I) complexes, irrespective of the counteranion, which are substantially less reactive as catalysts. This incomplete removal of chloride ligand could lead to false negative results when using the in situ generation of the gold(I) active species by silver-promoted chloride abstraction.

Silver salts play an important role in the generation of the more reactive cationic species in homogeneous catalysis.¹ Thus, chloride abstraction from neutral [LAuCl] complexes with a silver salt AgX is a standard procedure for the in situ formation of cationic complexes [LAuL']X. When X is a weakly coordinating anion such as Tf₂N[−], neutral complexes [LAuX] are formed.² On the other hand, silver salts with less coordinating anions such as AgBF₄ and AgSbF₆ lead to complexes [LAuL']X, where L' is a weakly coordinating ligand (i.e., MeCN, PhCN).³ Although so-called “naked gold complexes” [AuL]⁺ are often invoked in

catalytic transformations, there is yet no structural proof for their existence as stable, isolable species.⁴

Silver salts are not totally innocent in gold catalysis.^{5,6} Intriguingly, it has recently been proposed that the reactivity of gold catalysts generated in situ by silver(I) abstraction from [LAuCl] complexes can differ dramatically if they are filtered through Celite.⁷ Since filtration removed AgCl, the contrasting results suggested that a different active gold species was formed. Recently, aquo gold(I) complexes were identified when AgOTf was used in analytical grade CH₂Cl₂.⁸ The interference of Ag(I) in gold(I) catalysis was also recently demonstrated by the isolation of a chloride-bridged trimetallic dication with a triangular mixed gold/silver core after mixing neutral complex [JohnPhosAuCl] (1)³ with AgSbF₆, followed by filtration through Celite.⁹

Complex 1, and closely similar complexes,³ have often been used as precatalysts in gold(I)-catalyzed reactions assuming that their activation with a silver(I) salt results

[†] Additional address: Departament de Química Analítica i Química Orgànica, Universitat Rovira i Virgili, 43007 Tarragona, Spain.

(1) (a) Jiménez-Núñez, E.; Echavarren, A. M. *Chem. Rev.* **2008**, *108*, 3326–3350. (b) Gorin, D. J.; Sherry, B. D.; Toste, F. D. *Chem. Rev.* **2008**, *108*, 3351–3378. (c) Michelet, V.; Toullec, P. Y.; Genêt, J. P. *Angew. Chem., Int. Ed.* **2008**, *47*, 4268–4315. (d) Fürstner, A. *Chem. Soc. Rev.* **2009**, *38*, 3208–3221. (e) Rudolph, M.; Hashmi, A. S. K. *Chem. Soc. Rev.* **2012**, *41*, 2448–2462.

(2) Mézailles, N.; Ricard, L.; Gagosz, F. *Org. Lett.* **2005**, *7*, 4133–4136.

(3) (a) Nieto-Oberhuber, C.; López, S.; Echavarren, A. M. *J. Am. Chem. Soc.* **2005**, *127*, 6178–6179. (b) Herrero-Gómez, E.; Nieto-Oberhuber, C.; López, S.; Benet-Buchholz, J.; Echavarren, A. M. *Angew. Chem., Int. Ed.* **2006**, *45*, 5455–5459. (c) Pérez-Galán, P.; Delpont, N.; Herrero-Gómez, E.; Maseras, F.; Echavarren, A. M. *Chem.—Eur. J.* **2010**, *16*, 5324–5332.

(4) A recent report claimed the formation of [IPr**Au]BARF₂₄ with the bulky ligand IPr** = 2,6-bis(di-4-*tert*-butylphenyl)methyl-4-methylphenyl, although no structural proof was provided: Weber, S. D.; Zahner, D.; Rominger, F.; Straub, B. F. *Chem. Commun.* **2012**, *48*, 11325–11327.

(5) Nevado, C.; Echavarren, A. M. *Chem.—Eur. J.* **2005**, *11*, 3155–3164.

(6) Weber, D.; Gagné, M. R. *Org. Lett.* **2009**, *11*, 4962–4965.

(7) Wang, D.; Cai, R.; Sharma, S.; Jirak, J.; Thummanapelli, S. K.; Akhmedov, N. G.; Zhang, H.; Liu, X.; Petersen, J. L.; Shi, X. *J. Am. Chem. Soc.* **2012**, *134*, 9012–9019.

(8) Tang, Y.; Yu, B. *RSC Adv.* **2012**, *2*, 12686–12689.

(9) This work, published when our manuscript was in preparation, reported the formation of a different solvate of complex 2d from 1: Zhu, Y.; Day, C. S.; Zhang, L.; Hauser, K. J.; Jones, A. C. *Chem.—Eur. J.* **2013**, *19*, 12264–12271.

in the formation of the active catalytic species. Herein, we report that the abstraction of chloride anion from **1** with silver salts leads to the formation of chloride-bridged dinuclear gold(I) complexes, which are substantially less reactive as catalysts. This incomplete removal of chloride ligand by silver could give “false negative” results in gold-catalyzed reactions when using the in situ generation protocol.

We started by mixing in a 1:1 ratio [JohnPhosAuCl] (**1**) with different silver salts (AgNTf₂, AgOTf, AgBF₄, and AgSbF₆) in CD₂Cl₂. The resulting ¹H and ³¹P NMR spectra were examined before and after the filtration through Celite between –80 and +23 °C. In all cases, dinuclear [(JohnPhos)Au]₂ClX complexes **2a–d** were the major species (Scheme 1) that were isolated and characterized by X-ray diffraction (Figure 1).¹⁰ Crystalline complexes **2a–d** showed weak auriphilic interactions¹¹ (Au–Au distances = 3.48–3.54 Å, Au–Cl–Au angles = 94.7–97.5°),¹² which have also been observed in related gold(I) complexes with different phosphine ligands.¹³

Reaction of **1** with 1 equiv of AgNTf₂ leads to a 1:1 mixture of **2a** and neutral [JohnPhosAuNTf₂] (**3a**). Dinuclear complex **2b** was the only complex observed after mixing **1** with AgOTf, which evidenced the lower coordinating nature of the triflate anion. After filtration through Celite, a 5:1.5:1 mixture of **2b**, [JohnPhosAuOTf] (**3b**),¹⁴ and [JohnPhosAu(H₂O)]OTf (**4**) was obtained. Aquo complex **4** is related to [Ph₃PAu(H₂O)]OTf, recently observed by treatment of [Ph₃PAuCl] with AgOTf in wet CH₂Cl₂.⁸ For the clean formation of neutral complex **3b** from **1**, 5 equiv of AgOTf was required.

Digold complex **2c** was the only complex obtained from **1** and AgBF₄. In this case, addition of up to 10 equiv of AgBF₄ was not enough to cleave the chloride bridge of this dinuclear complex. Nevertheless, filtration through

Scheme 1

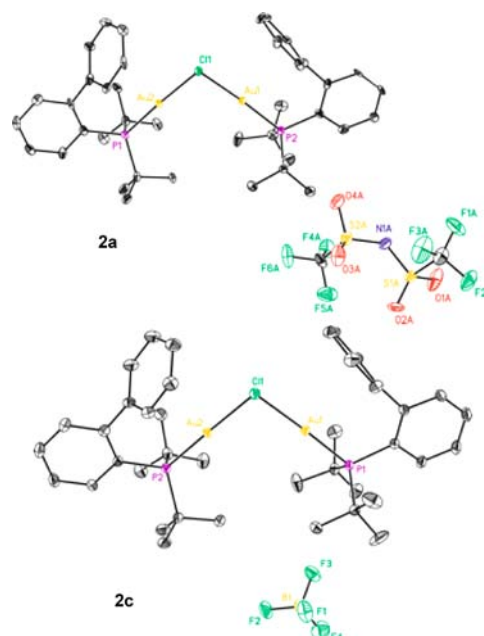
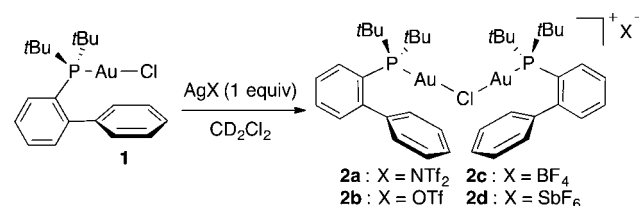


Figure 1. Selected X-ray structures for complexes **2**. ORTEP plots (50% thermal ellipsoids). Hydrogen atoms and solvate molecules omitted for clarity.

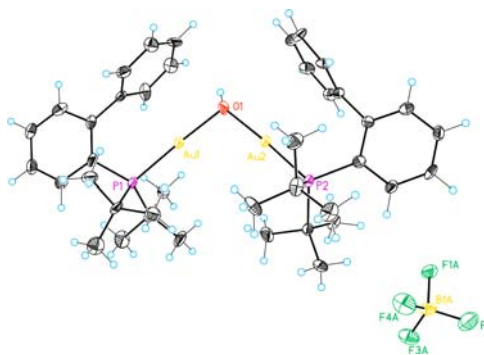


Figure 2. Structure of digold(I) complex **5**. ORTEP plot (50% thermal ellipsoids).

Celite gave small amounts of the dinuclear hydroxy species [(JohnPhosAu)₂(OH)]BF₄ (**5**) (Figure 2).^{15,16} Finally, when

(10) X-ray crystal structures: **2a**, CCDC 963480; **2b**, CCDC 963484; **2c**, CCDC 963479; **2d**, CCDC 963481; **3a**, CCDC 963485; **3b**, CCDC 963486; **5**, CCDC 963482. See the Supporting Information for details on the X-ray structures.

(11) (a) Schmidbaur, H.; Schier, A. *Chem. Soc. Rev.* **2012**, *41*, 370–412. (b) Schmidbaur, H.; Schier, A. *Chem. Soc. Rev.* **2008**, *37*, 1931–1951.

(12) The shortest Au–Au distance (3.48 Å) and more acute Au–Cl–Au angle (94.7°) were found for **2d**·(CH₂Cl₂)_{2.25}, in contrast with that reported in ref 9 for a different solvate **2d**·(H₂O)_{0.5} (Au–Au = 3.54 Å, Au–Cl–Au = 97.7°), which shows that packing and/or hydrogen bonding are also significant in these structures.

(13) (a) Usón, R.; Laguna, A.; Castrillo, M. B. *Synth. React. Inorg.-Met.-Org. Chem.* **1979**, *9*, 317–324. (b) Bayler, A.; Bauer, A.; Schmidbaur, H. *Chem. Ber.* **1997**, *130*, 115–118.

(14) (a) Zhdanko, A.; Ströbele, M.; Maier, M. E. *Chem.—Eur. J.* **2012**, *18*, 14732–14744. (b) Although **3b** has been occasionally depicted in the literature as [JohnPhosAu]OTf with a LAu⁺ cation, complex **3b** is neutral with covalently bound triflate (Au–O bond distance = 2.11 Å, P–Au–O bond angle 174.2). See the Supporting Information for details.

(15) (a) The Au–Au distance and the Au–O–Au angle are 3.38 Å and 105.0°. In the analogous complex [(JohnPhosAu)₂(OH)]SbF₆, these parameters are 3.35 Å and 108.1°. Adriaenssens, L.; Escrivano-Cuesta, A.; Homs, A.; Echavarren, A. M.; Ballester, P. *Eur. J. Org. Chem.* **2013**, 1494–1500.

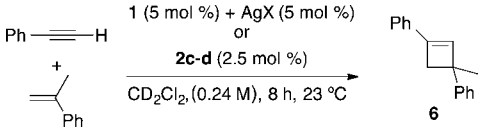
(16) Analogous gold species with N-heterocyclic carbenes as ligands have been reported and characterized by X-ray diffraction (a) Gaillard, S.; Bosson, J.; Ramón, R. S.; Nun, P.; Slawin, A. M. Z.; Nolan, S. P. *Chem.—Eur. J.* **2010**, *16*, 13729–13740. (b) Gómez-Suárez, A.; Oonishi, Y.; Meiries, S.; Nolan, S. P. *Organometallics* **2013**, *32*, 1106–1111.

AgSbF₆ was added to **1** in CD₂Cl₂, a broad signal corresponding to complex **2d** was observed.

To determine the relevance of the formation of complexes **2a–d** in catalysis, we examined three reactions under three different conditions: (A) in situ generation of the catalyst from **1** in the presence of the substrate(s), (B) in situ generation of the catalyst followed by the addition of the substrate(s), and (C) filtration of the catalyst through Celite after its generation in situ followed by the addition of the substrate(s). All the experiments were carried out with 3 mol % of **1** and AgX in CD₂Cl₂. We tested an intermolecular reaction of alkynes with alkenes¹⁷ and two relatively challenging cycloisomerizations of enynes bearing a disubstituted alkyne, a class of substrates known to react more sluggishly in gold-catalyzed reactions.^{3a,18}

(i) [2 + 2] Intermolecular Cycloaddition Reaction. The intermolecular reaction between phenylacetylene and α -methylstyrene gives cyclobutene **6** in 80% yield in the presence of [*t*BuXPhosAu(MeCN)]SbF₆ as the catalyst.¹⁷ However, when the active gold(I) catalyst was generated in situ using AgSbF₆, under conditions A and B, no cyclobutene **6** was formed. Filtration through Celite of the in situ formed catalyst (conditions C), led to **6** in 26% yield. Better results (46% yield) were obtained using digold complex **2d**, although the addition of 2.5 mol % of AgSbF₆ failed to give any **6**. These poor results are due to fast dimerization¹⁷ and oligomerization of α -methylstyrene in the presence of AgSbF₆.¹⁹ The fact that the filtration of the in situ generated complex through Celite (conditions C) gave less cyclobutene **6** (26%) than using **2d** (46%)

Table 1. Formation of Cyclobutene **6** by [2 + 2] Intermolecular Cycloaddition^a

		
conditions	AgSbF ₆	AgBF ₄
A	0	31
B	0	34
C	26	30
2c or 2d ^b	46	11
2c or 2d + AgX	0	34
[JohnPhosAu(MeCN)]X ^{b,c}	17	30

^a Yields determined by ¹H NMR using diphenylmethane as internal standard. ^b Reactions in the absence of added AgX. ^c X = SbF₆[−] (first column), X = BF₄[−] (second column)

(17) López-Carrillo, V.; Echavarren, A. M. *J. Am. Chem. Soc.* **2010**, *132*, 9292–9294.

(18) Nieto-Oberhuber, C.; Pérez-Galán, P.; Herrero-Gómez, E.; Lauterbach, T.; Rodríguez, C.; López, S.; Bour, C.; Rosellón, A.; Cárdenas, D. J.; Echavarren, A. M. *J. Am. Chem. Soc.* **2008**, *130*, 269–279.

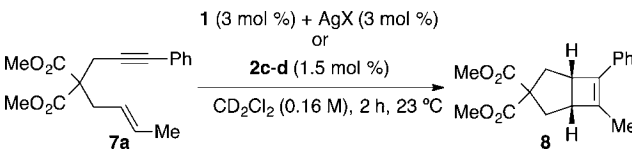
(19) Gorrirane, A.; García, H.; Corma, A.; Álvarez, E. *ACS Catal.* **2011**, *1*, 1647–1653.

suggested that AgSbF₆ is not totally removed by this filtration procedure. This reaction proceeded in low yield with the [JohnPhosAu(MeCN)]X (X = SbF₆, BF₄).

Different results were observed by using AgBF₄. Under conditions A–C, a low yield (32 ± 2%) was consistently obtained (Table 1). Poorer results were obtained with complex **2c** as catalyst, although the addition of 2.5 mol % of AgBF₄ increased the yield up to 34%.

(ii) Cycloisomerization of 1,6-Enyne **7a.** The previous experiments show that chloride-bridged complexes **2c,d** are moderately active as catalysts for the [2 + 2] cycloaddition. We also examined the reaction of 1,6-enyne **7a**, which undergoes cycloisomerization to form bicyclo[3.2.0]hept-6-ene derivative **8** (Table 2).^{3a,18,20} When AgSbF₆ was added to a solution containing the enyne and **1**, bicyclic product **8** was obtained in 77% yield after 2 h (conditions A). However, under conditions B, **8** was obtained in only 12% yield. No reaction was observed under conditions C. The reaction also failed using complex **2d** as catalyst. However, a 67% yield was achieved after the addition of AgSbF₆ to complex **2d**. The reaction was found to be much less effective when using AgBF₄.

Table 2. Cycloisomerization of 1,6-Enyne **7a**^a

		
conditions	AgSbF ₆	AgBF ₄ ^b
A	77	17
B	12	0
C	0	0
2c or 2d ^c	0	0
2c or 2d + AgX	67	26

^a Yields determined by ¹H NMR using diphenylmethane as internal standard. No reaction took place with [JohnPhosAu(MeCN)]X (X = SbF₆ or BF₄). ^b 5 mol %, 18 h. ^c Reactions in the absence of added AgX.

(iii) Cycloisomerization of 1,6-Enyne **7b.** Finally, we compared the performance of complexes **2c–d** with other gold(I) catalysts in the [4 + 2] cycloaddition of enyne **7b** to form tricyclic derivative **9** (Figure 3).^{3a,18} Cationic complex [JohnPhosAu(MeCN)]SbF₆ (**10**) and a 1:1 mixture of [JohnPhosAuCl] (**1**) and AgSbF₆ (in the presence of substrate **7b**; conditions A) gave tricyclic product **9** in a similar yield after 2.5 h. The reaction was faster with **1** in the absence of acetonitrile, which presumably competes with the substrate **7b** to form the active [LAu(substrate)]⁺ species.²¹

(20) Recent mechanistic work on this type of cycloisomerization: Brooner, R. E. M.; Brown, T. J.; Widenhofer, R. A. *Angew. Chem., Int. Ed.* **2013**, *52*, 6259–6261.

(21) The reaction was slower using complex [*t*-BuXPhosAu(MeCN)]-SbF₆ bearing a bulkier phosphine ligand (only 15% yield after 2.5 h), although the yield after 24 h reached 60%.

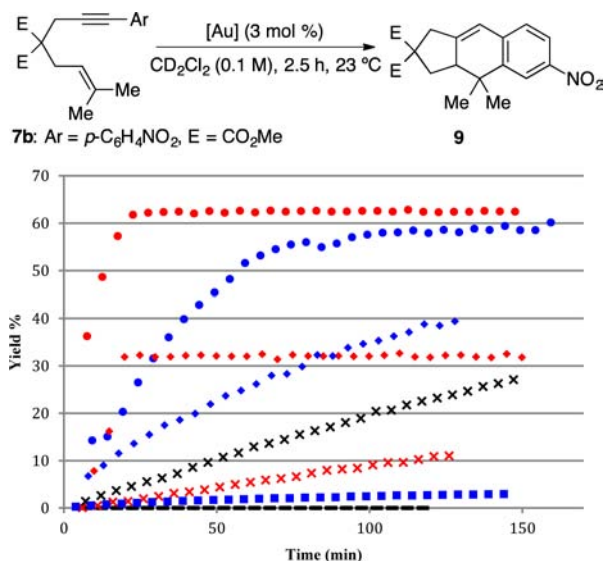


Figure 3. Cycloisomerization of 1,6-enyne **7b**: (red dot) **7b** + **1** + AgSbF₆; (blue dot) **7b** + **10**; (red diamond) **1** + AgSbF₆ + **7b**; (blue diamond) **7b** + **2d** (1.5 mol %) + AgSbF₆ (1.5 mol %); (x) **7b** + **2d**; (red x) **7b** + **2d** (1.5 mol %); (blue box) **7b** + **2c** (1.5 mol %); (—) **7b** + **1**. Yields determined by ¹H NMR using diphenylmethane as internal standard.

As expected, neutral [JohnPhosAuCl] (**1**) was inactive. However, when the addition of the silver salt to complex **1** was completed prior to the addition of the substrate **7b** (conditions B), cycloadduct **9** was formed in only 32% yield after 2.5 h. Dinuclear complex **2d** (1.5 mol %) led to **9** in even lower yield (11%) after 2.5 h. Addition of 1.5 mol % of AgSbF₆ to **2d** enhanced the yield up to 39%. Digold complex **2c** was a much poorer catalyst than **2d** even after long reaction periods.

All these results can be explained by the formation of the chloride-bridged complexes **2** when the catalyst is generated in situ in the absence of the coordinating substrate (conditions B). The order of addition of the silver salt is less important when the substrate is able to cleave the dinuclear complexes, as in the case of the [2 + 2] cycloaddition, but it has a significant impact if the substrate is less

coordinating²² and therefore cannot enter the catalytic cycle by cleaving the chloride-bridge of complexes **2**, as happens in the cycloisomerizations of **7a** and **7b**.

In summary, we have shown that formation of robust chloride-bridged dinuclear gold(I) complexes [(LAu)₂Cl]X occurs readily when mixing [LAuCl] precatalysts with silver salts in the absence of the substrate in non coordinating solvents such as CH₂Cl₂. These dinuclear complexes are significantly less active than cationic complexes [LAu(NCMe)]X. As a mnemonic, it might be useful to remind that the associative law is not followed in the preparation of the active catalysts by chloride abstraction with a silver salt: (LAuCl + substrate) + AgX ≠ (LAuCl + AgX) + substrate. In other words, the order of addition of the silver salt can have a significant effect in reactivity if the substrate is not able to efficiently cleave the chloride-bridge. This could explain, at least in part, the somewhat erratic results attributed to “silver effects”. Therefore, we recommend that if the gold catalyst is generated from a neutral [LAuCl] complex, then the silver salt should be added last, after premixing [LAuCl] with the substrate to minimize the formation of chloride-bridged dinuclear gold(I) complexes. Although the ligand of study has been JohnPhos in all the experiments, probably the aforementioned structures also form when using carbenes or other phosphines as ligands. Further experiments are ongoing in our laboratories.

Acknowledgment. We thank MEC (project CTQ2010-16088/BQU and FPI predoctoral Fellowship to A.H.), the European Research Council (Advanced Grant No. 321066), and the ICIQ Foundation for financial support. We are grateful to the ICIQ X-ray diffraction unit for the X-ray crystal structures and the ICIQ NMR unit.

Supporting Information Available. Experimental details, characterization data, and additional results. This material is available free of charge via the Internet at <http://pubs.acs.org>.

(22) Phenylacetylene coordinates more efficiently to [(JohnPhos)Au]⁺ than **7a** or **7b** as observed by ³¹P NMR.

The authors declare no competing financial interest.